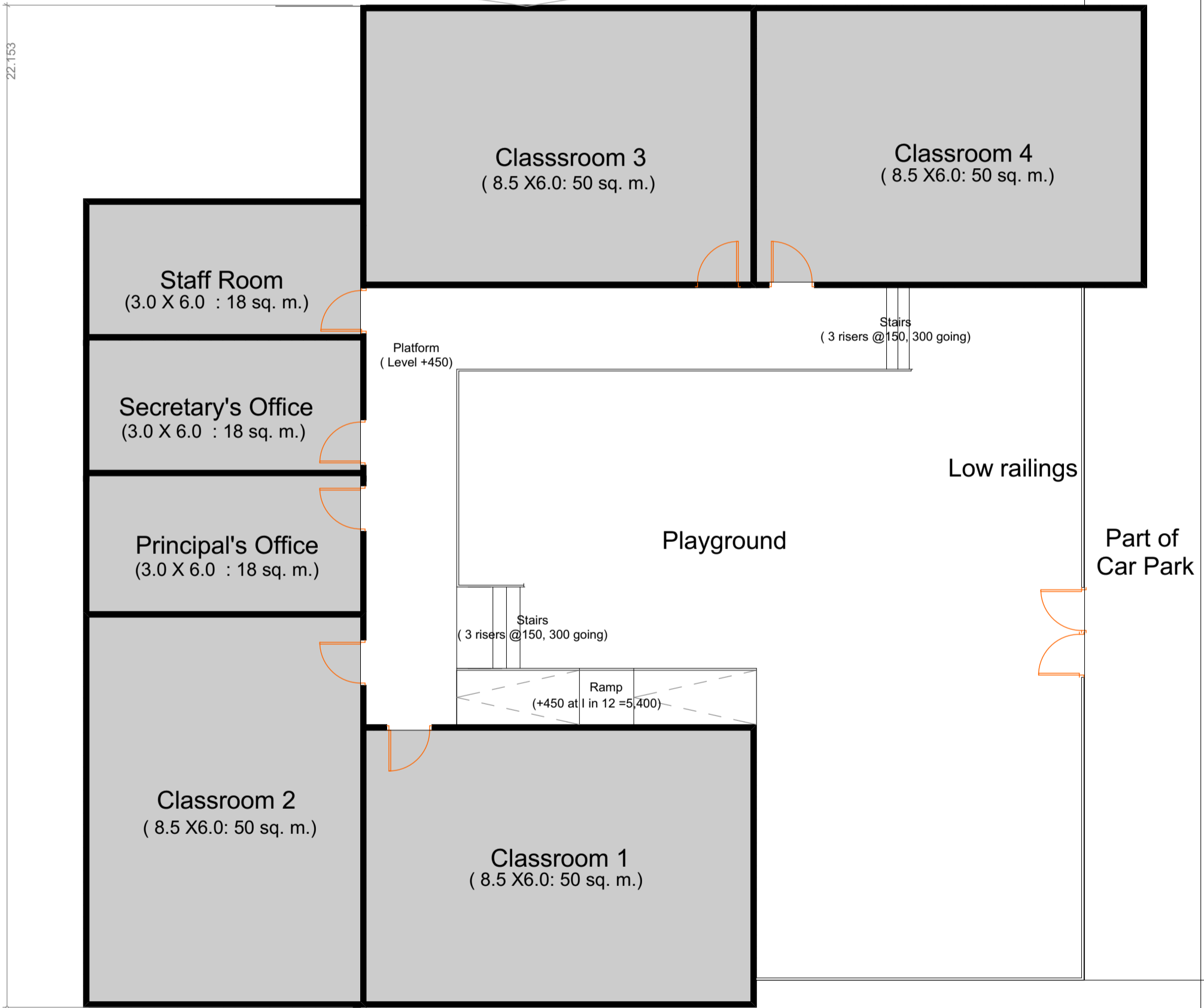
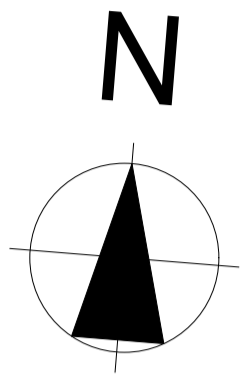


Nearest mature tree



22.153

Staff Room
(3.0 X 6.0 : 18 sq. m.)

Secretary's Office
(3.0 X 6.0 : 18 sq. m.)

Principal's Office
(3.0 X 6.0 : 18 sq. m.)

Classroom 2
(8.5 X 6.0: 50 sq. m.)

Classroom 3
(8.5 X 6.0: 50 sq. m.)

Classroom 4
(8.5 X 6.0: 50 sq. m.)

Classroom 1
(8.5 X 6.0: 50 sq. m.)

Platform
(Level +450)

Stairs
(3 risers @150, 300 going)

Stairs
(3 risers @150, 300 going)

Ramp
(+450 at 1 in 12 =5,400)

Low railings

Playground

Part of
Car Park

Part of Landscaped area

PLAN 1:100

**Proposed temporary Primary School
at Greystones Rugby Club**

③

P M Ging Architect. Unit G, Tower Centre, Monastery Road, Clondalkin, Dublin 22